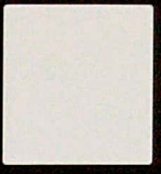


MOOD BOARD



WHITE IS A COLOR OF PURITY AND GIVES CALMNESS AND A FEEL GOOD ENVIRONMENT.



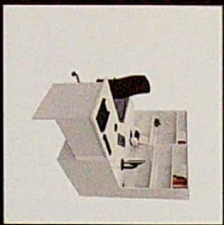
BLACK IS A COLOR OF DOMINANCE AND SELF-CONFIDENCE.



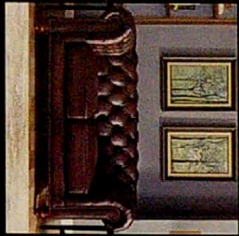
BROWN GIVES A FEEL OF NATURE AND COMFORT AND MAKES MORE PRODUCTIVE.

MATERIAL BOARD

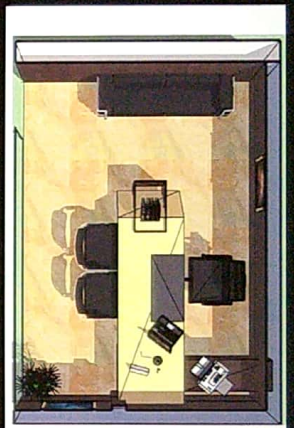
GLASS PARTITION WALL FOR PRIVACY IN WORKING.



IOFFICE CABIN CORNER SEATING WITH WORKING DESK.



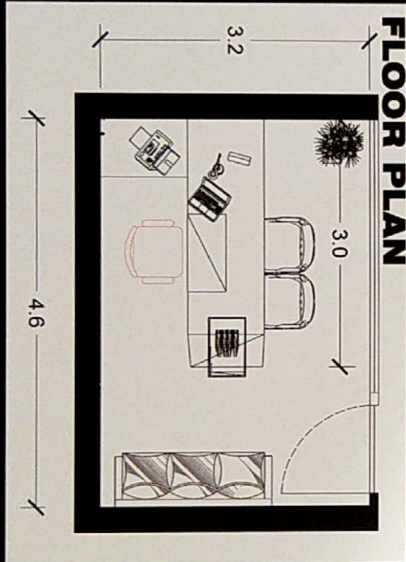
SOFA FOR CLIENT SEATING IN THE CABIN FOR VISIT



FLOOR PLAN



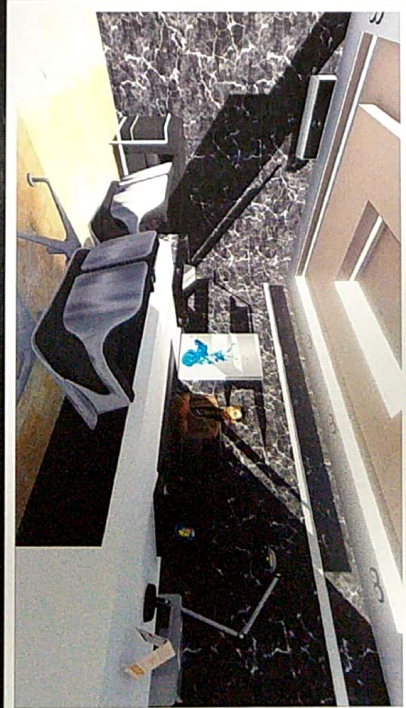
ISOMETRIC VIEW



FLOOR PLAN

INTERIOR DESIGN

(OFFICE CABIN)



K.GOKUL
REG NO : 171011101015



WOOD BOARD



BROWN GIVES A FEEL OF NATURE AND COMFORT AND MAKES MORE PRODUCTIVE.

WHITE IS A COLOR OF PURITY AND GIVES CALMNESS AND A FEEL GOOD ENVIRONMENT.



BLACK IS A COLOR OF DOMINANCE AND SELF-CONFIDENCE.

MATERIAL BOARD

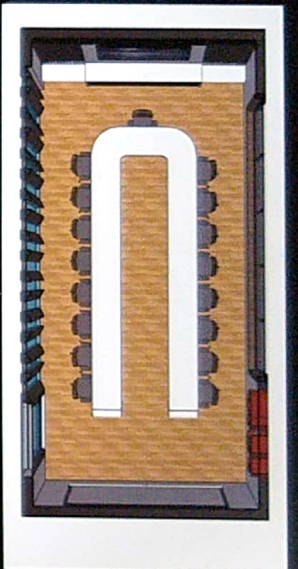
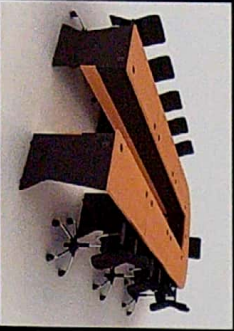
WOODEN GLASS PARTITION WALL FOR AESTETICS AND GOOD LOOKS



OFFICE ARM REST AIR CUSSION CHAIR WHICH REDUCES BACK - PAIN



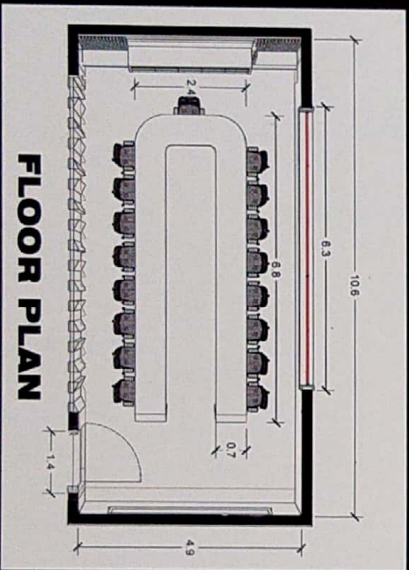
U-SHAPED SEATING FOR CONFERENCE ROOM



3-D VIEW



ISOMETRIC VIEW



FLOOR PLAN

INTERIOR DESIGN

(CONFERENCE ROOM)



K.GOKUL
REG NO : 171011101015



MOTIVE - ZEPHYRS



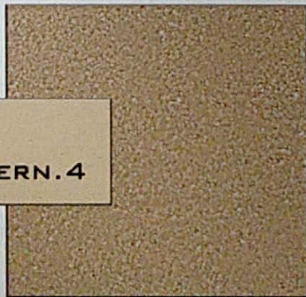
GREY BEECHWOOD_NATURAL FLOORING-1



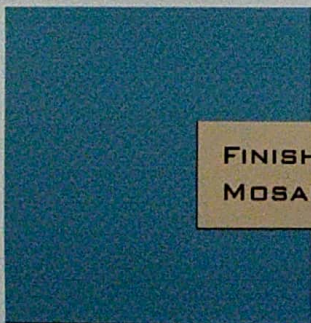
CONCRETE.CAST-IN-PLACE. PANELS.REVEAL.2



FINISHES.MASONRY FLOORING.TERRAZZO.WHITE-3



FINISHES.FLOORING. CARPET.BERBER PATTERN.4



FINISHES.TILING.CERAMIC. MOSAIC.BLUE - 5



Foor Plan



Wall section



View







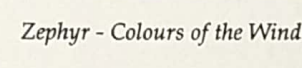
Sectional elevation

MOTIVE - ZEPHYRS

Zephyr may refer to a light wind or west wind. A west wind is a wind that blows from the west, in an eastward direction.

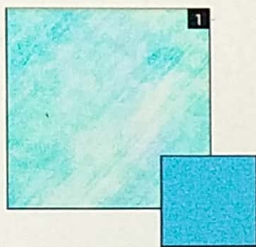
In Greek mythology, Zephyrus was the personification of the west wind and the bringer of light spring and early summer breezes; his Roman equivalent was Favonius.

Colors in Palette

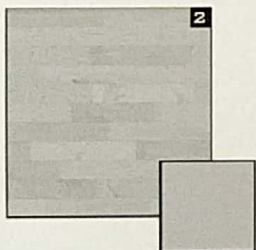
Color	Hex	RGB
	#07e0f1	(215, 233, 241)
	#0eb8d1	(207, 235, 253)
	#003366	(178, 211, 234)
	#99d7f0	(159, 215, 251)
	#67c6fa	(135, 208, 250)

Inspired by the colours of the wind that come with seasonal change, the Zephyr Palette contains a variety of pastel, deep, bright and dark colours, making it a versatile palette capable of creating countless looks.

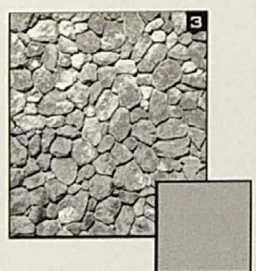
Zephyr - Colours of the Wind



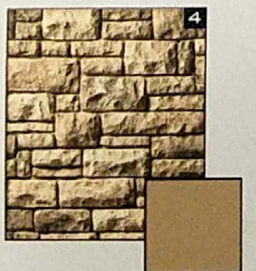
1. Zephyr - a blessing and a curse at the same time. If it feels too homey, you are not going to work either. You have to find that fine line between work and pleasure and still have an inspiring work environment. So the wall emotes to boost the inspiring work.



2. Grey laminate flooring is a huge trend for corporate space and with its versatility there are barely any colours out there that can't pair with this versatility.



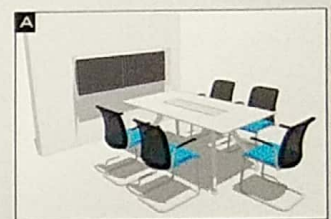
3. Pebble stone flooring is 100% natural pebbles that are tumbled smooth and then mixed with a grey cement OR white cement. It is designed to be poured seamlessly over concrete inside and out. Pebble stone is perfect as a refinishing product for damaged or unsightly concrete.



4. Decorative accent wall panels made of faux brick, stone or rock provide a quick and easy way to add dramatic visual impact to any room.



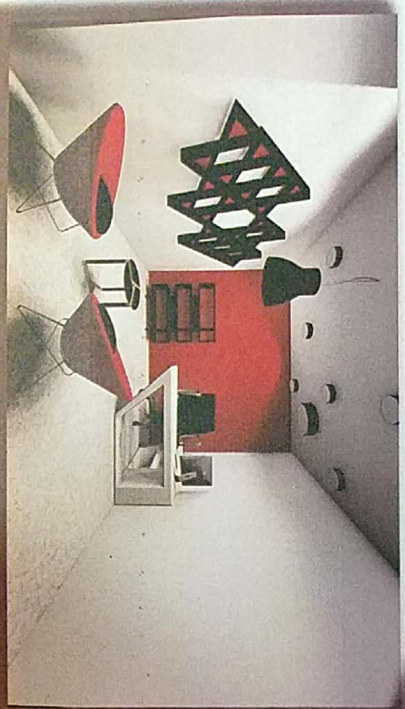
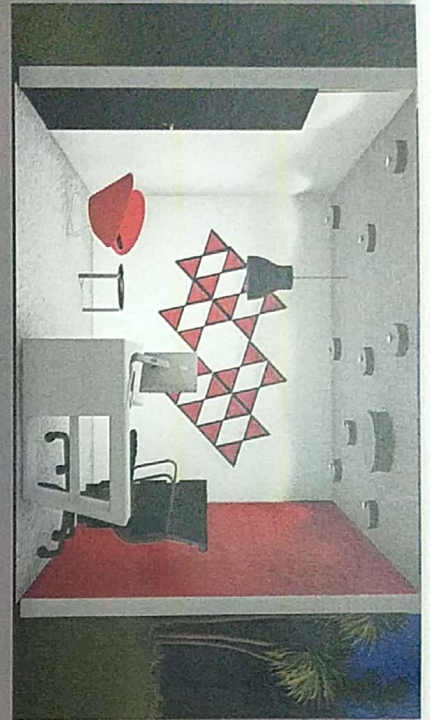
A. The cyan meeting room is flooded in natural light and equipped with state-of-art technology.



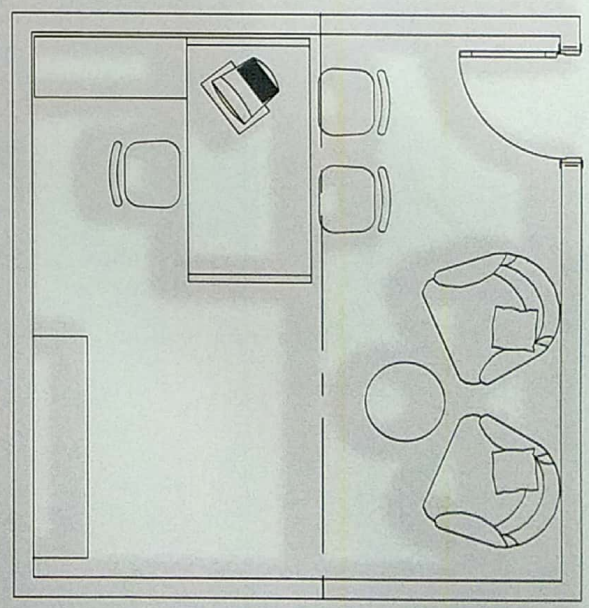
B. The wonderful thing about decorating an office desk is that it requires minimal energy and very little things.

C. Lounge spaces are more important for office. The office lounge is no longer just a place to take a break. In modern workplace, office lounges have evolved to become a place where people come to collaborate and share ideas.



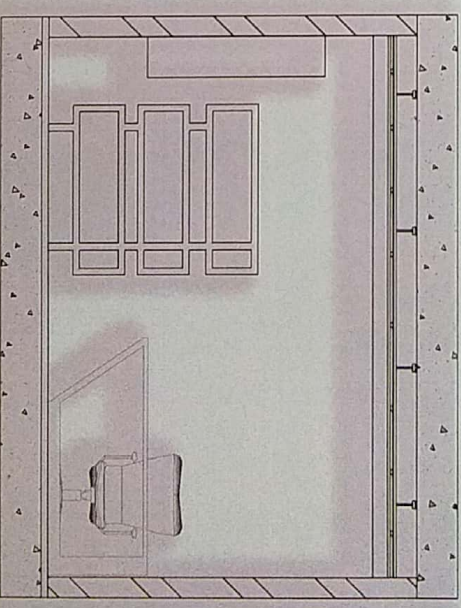


A
4m



4m

PLAN



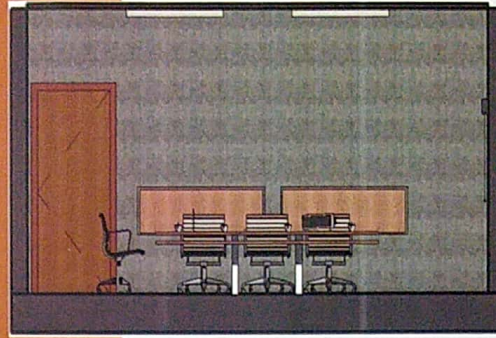
SECTION AA

P. THARUNIKA
BARCH
3RD YR/ 6TH SEM
171011101054

CONCEPT:

The space acts as a tranquil place with contemporary approach. To achieve the cooperate office furnished with bold, natural and high - quality materials like teak wood, concrete, metal, brick and glass

PLAN - SECTION



CONFERENCE ROOM



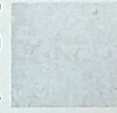
MOOD BOARD



PRESTRESSED CONCRETE



TEAK WOOD TABLE

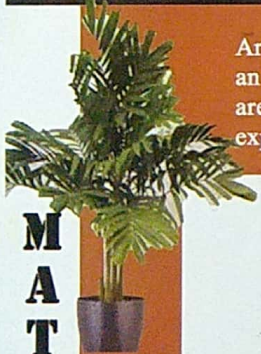


GYPSUM BOARD WALL FINISH



GROUND HATCH VINYL FLOOR FINISH

Areca palm plant is placed as an accent pieces, to soften areas or even to create a certain expression.



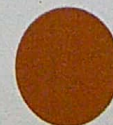
MATERIAL BOARD



Birch wooden finished ptale supported by X-Based metal stand of a meeting table



INTERIOR DESIGN



CSA.ESHA
B.ARCH /
III - YEAR
VI - SEM

CONFERENCE ROOM



VIEWS

THEME :

RED

CONTEMPORARY

Red is a physical colour which represents **COURAGE, STRENGTH AND EXCITEMENT.**

To stimulate people to make quick decisions.

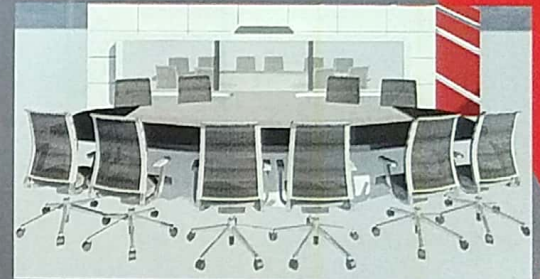
MOOD BOARD



RED

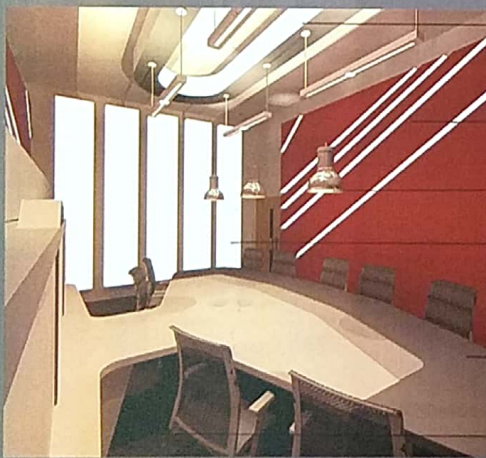
DARK RED

WHITE



Conference table coloured with null gry and black iron chairs

MATERIALS USED



DESIGNER LIGHT

CONTEMPORARY WALLS

HANGING CEILING LIGHTS

MOOD LIGHT PANELS

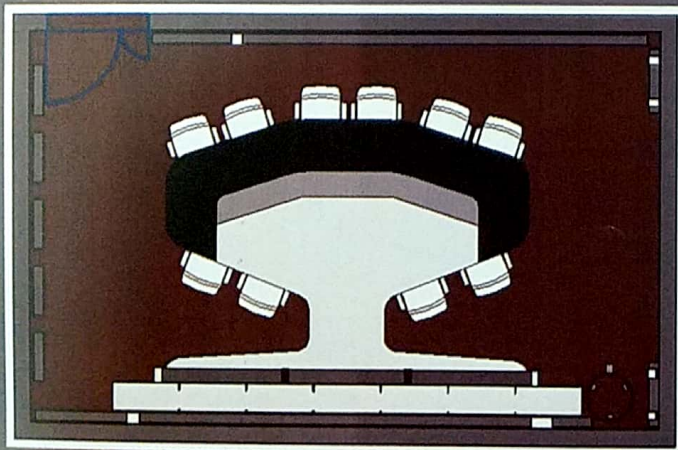
WOOD FINISHES

BROWN CARPET FLOORING



Striped wall pattern with red finishes. Strip consists of LED lights

PLAN



The total dimension of conference room is 8m * 5m which has the capacity to have 10-12 seats.



SWATHI SUKANDAN
171011101049
B.ARCH 3rd YR 6th SEM
DR MGR UNIVERSITY

WORKSTATION CABIN

THEME : BLUE CONTEMPORARY

Blue is said to have positive impact on productivity of employees. Blue will not turn monotonous on mixture of other colours. A mixture of white could be pleasing. White and pastel blue colour can make cabin look huge.

MOOD BOARD



PASTEL BLUE

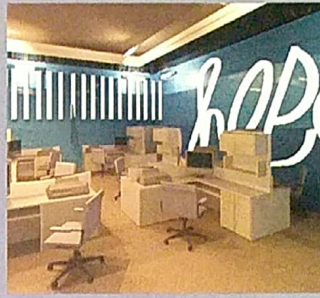


FADE WHITE



WHITE

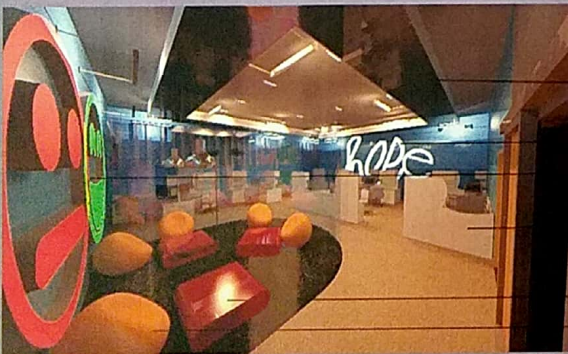
White coloured cabins and blue wall could be relaxing



V
I
E
W
S



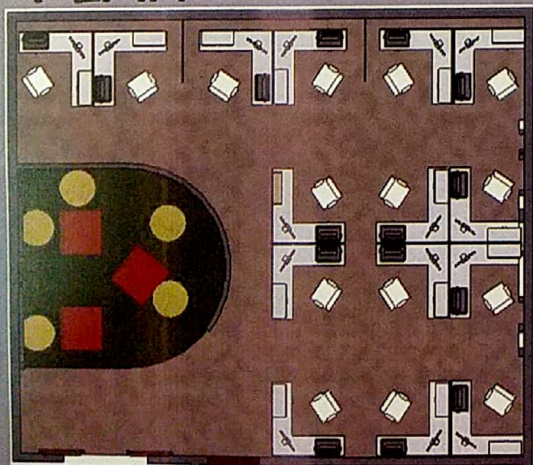
MATERIALS USED



- DESIGNER PANEL
- HOPE LIGHT (CUSTOM)
- MOOD LIGHT
- WHITE CABINS
- OVAL COFFEE TABLE
- BEAN BAG



PLAN



Striped wall pattern with blue finishes. Strip consists of LED lights

Every cabin is spaced upto 1.5m spacing and rest areas are provided



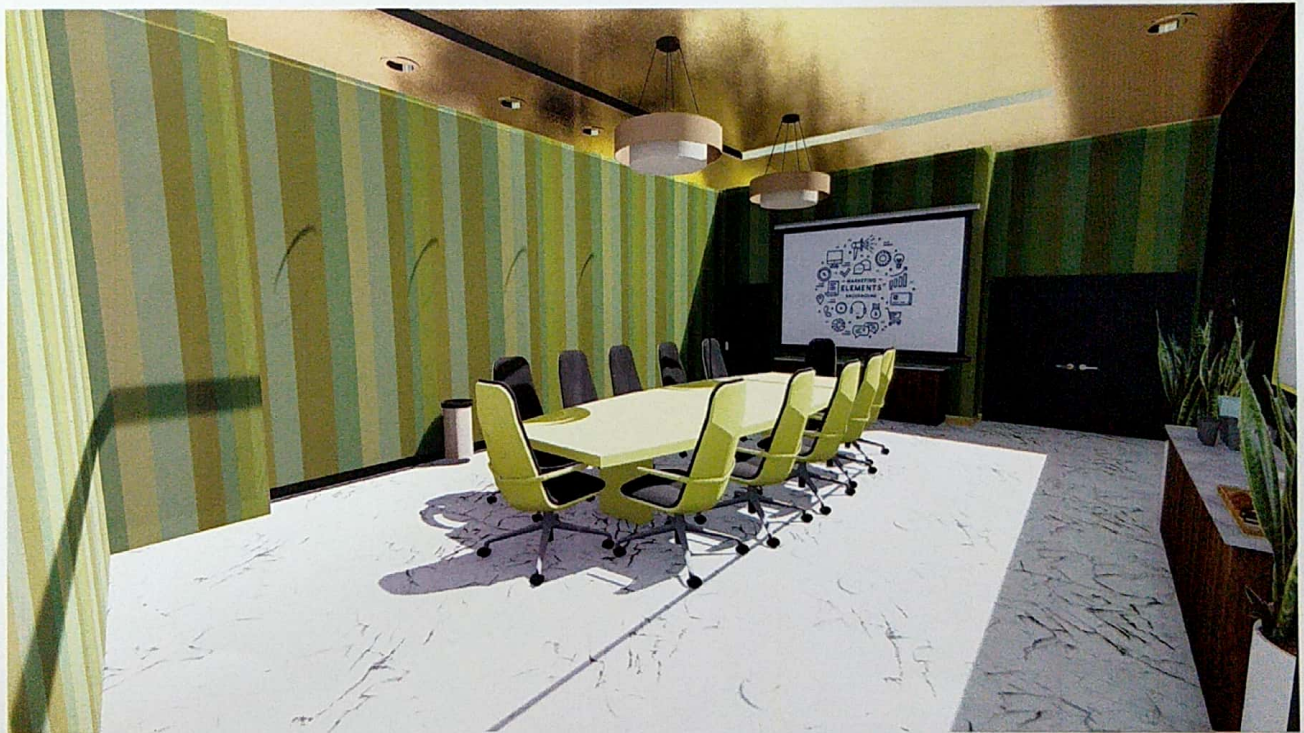
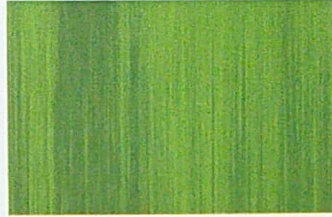
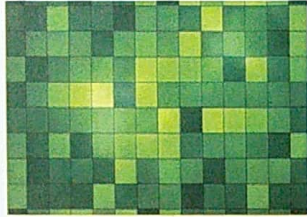
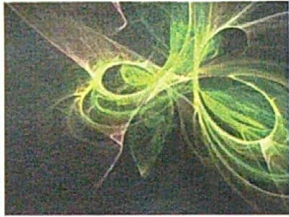
SWATHI SUKANDAN
171011101049
B.ARCH 3rd YR 6th SEM
DR MGR UNIVERSITY

BOARD ROOM

CONCEPT:

THE COLOR APPLE GREEN WITH HEXADECIMAL COLOR CODE #8DB600 IS A MEDIUM DARK SHADE OF YELLOW-GREEN. IN THE RGB COLOR MODEL #8DB600 IS COMPRISED OF 55.29% RED, 71.37% GREEN AND 0% BLUE.

IN SUBTRACTIVE COLOR SYSTEMS, USED IN PAINTING AND COLOR PRINTING, IT IS CREATED BY A COMBINATION OF YELLOW AND BLUE, OR YELLOW AND CYAN; IN THE RGB COLOR MODEL, USED ON TELEVISION AND COMPUTER SCREENS, IT IS ONE OF THE ADDITIVE PRIMARY COLORS, ALONG WITH RED AND BLUE, WHICH ARE MIXED IN DIFFERENT COMBINATIONS TO CREATE ALL OTHER COLORS.



MATERIALS

- FLOORING: MARBLE FLOORING
- WALLS: CURTAINS (SHADES OF GREEN APPLE)
- CEILING: BRASS METALIC
- DOORS: DEEP TAN WOOD DOORS
- CONFERENCE TABLE: GREEN APPLE PAINT
- CHAIRS: GREEN APPLE PAINT
- LIGHTINGS: LED FIXTURES IN THE CEILING
- SIDE TABLE: WOOD FINISHED
- PROJECTOR TABLE: WOOD FINISHED
- VASES: DIEFFENBACHIA PLANTS IN VASES

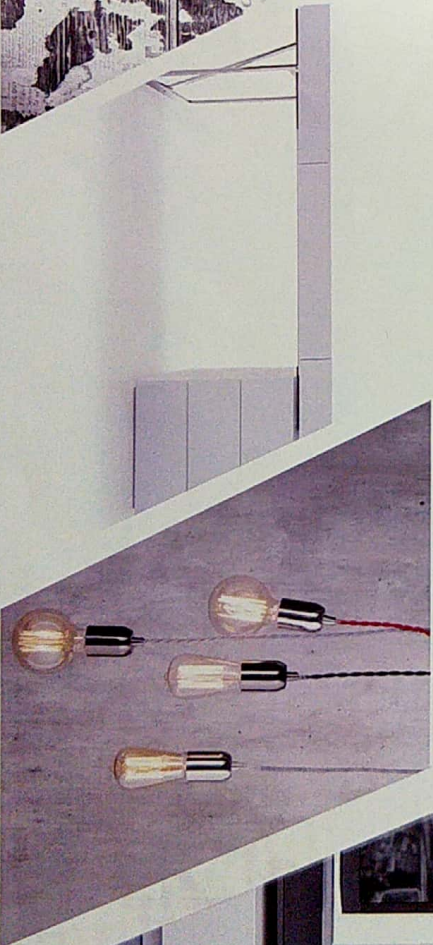
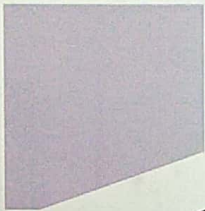


V.VISHNUPRIYA
171011101057
SEM 6
INTERIOR DESIGN

MINIMALISTIC

OFFICE CABIN DESIGN FOR THE MANAGER OF INDIAN EXPRESS PVT LIMITED

THE RIGHT SHADE OF GRAY CAN ACTUALLY BE VERY CALMING AND RELAXING. IT'S A PERFECT NEUTRAL COLOR, WHICH MEANS IT WORKS WELL WITH PRETTY MUCH ANY COLOR OR PALETTE.



H VISHWA KAMSANI
171011101058

INTERIOR DESIGN